



# Effects of a short abstinence period on sperm quality in oligozoospermic men

Nattaporn Poopaibool<sup>1</sup>, Amornrat Tangprasittipap<sup>2</sup>, Sukanya Chumchuen<sup>2</sup>, Chonthicha Satirapod<sup>1</sup>, Artitaya Singwongsa<sup>1</sup>

<sup>1</sup>Reproductive Endocrinology and Infertility Unit, Department of Obstetrics & Gynecology; <sup>2</sup>Office of Research, Academic Affairs and Innovations, Faculty of Medicine, Ramathibodi Hospital, Mahidol University, Bangkok, Thailand

**Objective:** The aim of this study was to compare semen parameters and sperm DNA fragmentation (SDF) and explore the relationship between semen parameters and SDF between 2 and 7 days of abstinence and a short abstinence period (within 4 hours) in oligozoospermic infertile patients.

**Methods:** Two semen samples were collected from infertile oligozoospermic men (n=34) after an abstinence period of 2 to 7 days and within 4 hours, respectively. Sperm parameters were compared between the two abstinence duration groups, including semen volume, sperm concentration, total sperm count, sperm motility, total motile sperm count (TMSC), morphology, and SDF.

**Results:** The semen volume, concentration, and total sperm count were significantly decreased after 4 hours of abstinence than after 2 to 7 days of abstinence, with median differences of 1.2 mL ( $p<0.001$ ),  $2\times 10^6$ /mL ( $p=0.011$ ), and  $9.6\times 10^6$ /ejaculation ( $p<0.001$ ), respectively. TMSC was significantly lower after a short abstinence, with a median difference of  $4.24\times 10^6$ /ejaculate ( $p<0.001$ ). However, there were no significance differences in the percentage of motility, the SDF, and the percentage of sperm with normal morphology. Interestingly, volume, concentration, total sperm count, sperm motility, and SDF, but not TMSC, exhibited significant linear correlations between the two abstinence groups in univariate regression analysis, except for TMSC.

**Conclusion:** In oligozoospermic men, the volume, concentration, and total sperm count were significantly lower after a short abstinence period, but without adverse effects on sperm motility and SDF.

**Keywords:** Oligozoospermic; Semen parameter; Short abstinence; Sperm DNA fragmentation

## Introduction

Male factor infertility is the sole cause of infertility in approximately 20% of infertile couples and an essential contributing factor in another 20% to 40% of couples with reproductive failure [1]. In the initial evaluation, at least one proper semen analysis should be performed. If an abnormality is found, another semen analysis should

be performed after at least 4 weeks [2]. Oligozoospermia is the most common abnormality and is typically a crucial contributing factor in men classified as infertile [3]. To solve infertility problems, assisted reproductive technologies (ARTs), such as intrauterine insemination (IUI), *in vitro* fertilization (IVF), and intracytoplasmic sperm injection (ICSI), have been developed. These procedures require sperm preparation to concentrate motile spermatozoa. Progressive motility and the total motile sperm count (TMSC) are the initial sperm characteristics most closely related to pregnancy. IUI is an effective therapy for male factor infertility when initial sperm motility is  $\geq 30\%$ , and the TMSC is  $\geq 5\times 10^6$  per ejaculate [4]. IVF is preferable to IUI when the initial values are lower because of its higher effectiveness and cost-effectiveness. ICSI generally serves as a robust bypass procedure instead of a first-line treatment, and it has dramatically improved the fertility prospects in patients with oligozoospermia [5]. However, standard semen analysis may not completely provide all information to evaluate male fertility status, as 15% of patients with male factor

Received: April 26, 2023 · Revised: July 8, 2023 · Accepted: July 25, 2023

Corresponding author: **Artitaya Singwongsa**

Reproductive Endocrinology and Infertility Unit, Department of Obstetrics & Gynecology, Faculty of Medicine, Ramathibodi Hospital, Mahidol University, 270 Rama VI Rd. Ratchathewi, Bangkok, Thailand  
Tel: +66-890436303 Fax: +66-22012805 E-mail: artitaya.sin@mahidol.ac.th

\*The study was financially supported by the Research Fund of the Faculty of Medicine Ramathibodi Hospital.

This is an Open Access article distributed under the terms of the Creative Commons Attribution Non-Commercial License (<http://creativecommons.org/licenses/by-nc/4.0/>) which permits unrestricted non-commercial use, distribution, and reproduction in any medium, provided the original work is properly cited.

infertility were found to have normal semen analysis results [6]. Therefore, additional tests should be performed in addition to using the results of the semen analysis alone. Extensive research has been conducted during the past decade is the integrity of sperm DNA. Several studies have shown that sperm DNA fragmentation (SDF) had a statistically significant negative impact on the chance of pregnancy [7].

Human sperm is produced in the seminiferous tubules and stored in the epididymis for future release. The epididymal transit time has been estimated to range from 2 to 11 days. Variation is influenced by the frequency of ejaculation [8]. During epididymal transit and storage, spermatozoa are significantly exposed to reactive oxygen species (ROS) [9]. Prolonged exposure to ROS results in an alteration of sperm function and fertilizing capacity. They also affect the sperm genome, causing high frequencies of single- and double-strand DNA breaks [10]. The World Health Organization (WHO) recommends 2 to 7 days of abstinence before collection for standard semen analysis [11]. However, recent studies have suggested that shorter abstinence is associated with improved ART outcomes [12-16]. A large cohort study in normozoospermic subfertile men showed that longer abstinence was associated with increased ejaculate volume, concentration, total sperm count, and TMSC. However, in oligozoospermic men, longer abstinence time was not associated with improvements in semen parameters, except for ejaculate volume [17]. Prolonged sexual abstinence can have a negative impact on motility, viability, and SDF [18]. However, a significant increase in total and progressive motility was observed after a short abstinence period of 4 hours [19]. One day of abstinence improved sperm quality by protecting against ROS damage and a higher total seminal antioxidant capacity [20]. There is a lack of consensus on the exact impact of the abstinence period on the conventional and functional parameters of sperm. Thus, the effect of sexual abstinence on sperm parameters is still debatable [18,21-23].

The association between short abstinence and semen quality in oligozoospermic men has been evaluated in some studies, but the results have remained inconclusive. Therefore, we conducted a prospective experimental study in oligozoospermic men to compare sperm parameters and SDF in semen samples after 2 to 7 days of abstinence and within 4 hours of abstinence and explore the relationship between semen parameters and SDF between the two abstinence periods.

## Methods

### 1. Study population and sample size

This single center prospective experimental study enrolled 42 oligozoospermic men aged 20 to 45 years with infertility problems visiting the Assisted Reproductive Technology Clinic, Ramathibodi Hos-

pital, Bangkok, Thailand, from February 2021 to February 2022. The study was approved by the Committee on Human Rights Related to Research Involving Human Subjects at Ramathibodi Hospital, Mahidol University (MURA 2020/1895). Written informed consent was obtained from all patients.

### 2. Inclusion criteria

Men who met all inclusion criteria were invited to participate in the study.

- (1) Men aged 20 to 45 years with infertility that had lasted for more than 1 year at the time of screening.
- (2) At least one previous semen analysis result with a sperm concentration less than  $15 \times 10^6$ /mL with an abstinence period of 2 to 7 days.
- (3) A semen volume of at least 1.5 mL per ejaculation at the screening.
- (4) No history of previous testicular/penile surgery or vasectomy.
- (5) No history of cancer, no history of radiation therapy, or chemotherapy.

Volunteers who met all inclusion criteria were asked to abstain for 2 to 7 days to collect study samples. Furthermore, the study sample collection had to be collected for at least 4 weeks from the previous semen analysis. Semen and SDF analyses were performed from semen after the abstinence for 2 to 7 days (referred to as the standard abstinence sample or sample A) and from semen collected within a 4-hour interval from sample A (referred to as the short abstinence sample or sample B) (Figure 1).

### 3. Exclusion criteria

The volunteers were excluded from the study analysis if they had one of the following.

- (1) Sperm concentration  $\geq 15 \times 10^6$ /mL when repeated at least 4 weeks after a previous semen analysis.
- (2) Inability to ejaculate by masturbation.
- (3) Azoospermia from sample A.

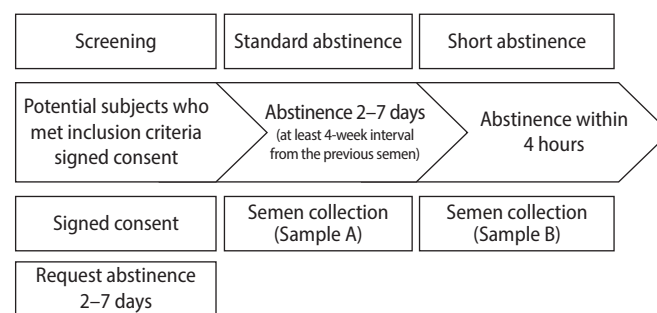


Figure 1. Study flowchart.

#### 4. Semen collection and analysis procedure

Semen samples were collected from the volunteers by masturbation and provided routine information on the duration of abstinence to technicians. After liquefaction, the semen volume and pH were measured. Sperm motility analysis was performed on a 10- $\mu$ L drop on a glass slide with a 22 $\times$ 22 mm coverslip for two replicates. Sperm motility was analyzed with phase-contrast optics at  $\times$ 200 magnification with an eyepiece reticle. At least 200 sperm were evaluated in each replicate to determine the percentage of different motility categories according to the WHO 2010 guideline [11].

Sperm concentration measurement was performed by diluting a 50- $\mu$ L semen sample with fixative. Sperm counting was then performed using an improved Neubauer hemocytometer. At least 200 spermatozoa per replicate were counted and compared whether the difference is acceptable or not according to WHO 2010 standard. If so, proceed to calculate the concentration in spermatozoa per mL; if not, prepare a new dilution.

Sperm morphology was evaluated by eosin/methylene blue staining (Dip Quick Stain; SE Synergist) using bright field optics at  $\times$ 1,000 magnification with an oil immersion microscope based on Kruger's strict criteria.

#### 5. SDF assessment using a TUNEL assay and flow cytometry

SDF was evaluated using a terminal deoxynucleotidyl transferase dUTP nick end labeling (TUNEL) assay with an APO-DIRECT Kit (BD Biosciences), as described by Sharma et al. [24]. Spermatozoa within the propidium iodide (PI)/RNase solution were analyzed by flow cytometry (BD FACSVerse Flow Cytometer). The output data were imported and analyzed using BD FACSuit software with a 488 nm argon laser as the light source. Two dyes were used: PI, which stains total DNA, and fluorescein isothiocyanate (FITC-dUTP), which stains broken DNA. PI fluoresces at about 623 nm and FITC at 520 nm. The results were expressed as the percentage of SDF. The Supplementary Figure 1 shows the measurement of SDF.

#### 6. Statistical analysis

Statistical analyses were performed using STATA Statistics for Windows version 14.0 (StataCorp LLC). For continuous variables, the mean with standard deviation (SD) or median with interquartile range (IQR) were used for data presentation as appropriate. Frequencies with percentages were used to describe categorical data. The paired t-test or Wilcoxon signed-rank test was used to compare continuous data from the short and 2- to 7-day periods of abstinence. Linear regression analysis explored the linear relationship between parameters with both abstinence periods. The level of statistical significance was set at  $p < 0.05$ .

## Results

### 1. Baseline characteristics of semen parameters at screening

Forty-two men with at least one previous examination indicating oligozoospermia who met the study inclusion were invited and consented to participate in the study. Eight volunteers were excluded from the study analysis because sample A showed a sperm concentration  $\geq 15 \times 10^6$ /mL. Therefore, 34 volunteers were included in the study (Figure 2).

The mean $\pm$ SD age of the oligozoospermic men in this study was 37.08 $\pm$ 5.05 years, with the median of semen volume, concentration, and total sperm count of 2.75 mL (IQR, 1.6 to 3.4),  $6 \times 10^6$ /mL (IQR, 3 to 10), and  $13.6 \times 10^6$ /ejaculate (IQR, 7.25 to 26.6), respectively. The mean $\pm$ SD of total motility was 46.64% $\pm$ 15.62%. The baseline characteristics of the semen parameters are shown in Table 1.

### 2. Comparison of semen parameters and SDF between 2 and 7 days and short abstinence

Semen volume, concentration, and total sperm count were significantly lower after the short abstinence period than after 2 to 7 days of abstinence. The median differences in the volume, concentration, and total sperm count after the short abstinence period were 1.2 mL ( $p < 0.001$ ),  $2 \times 10^6$ /mL ( $p = 0.011$ ), and  $9.6 \times 10^6$ /ejaculate ( $p < 0.001$ ), respectively. The percentage of non-progressive motility was significantly higher after the short abstinence period ( $p < 0.036$ ), while

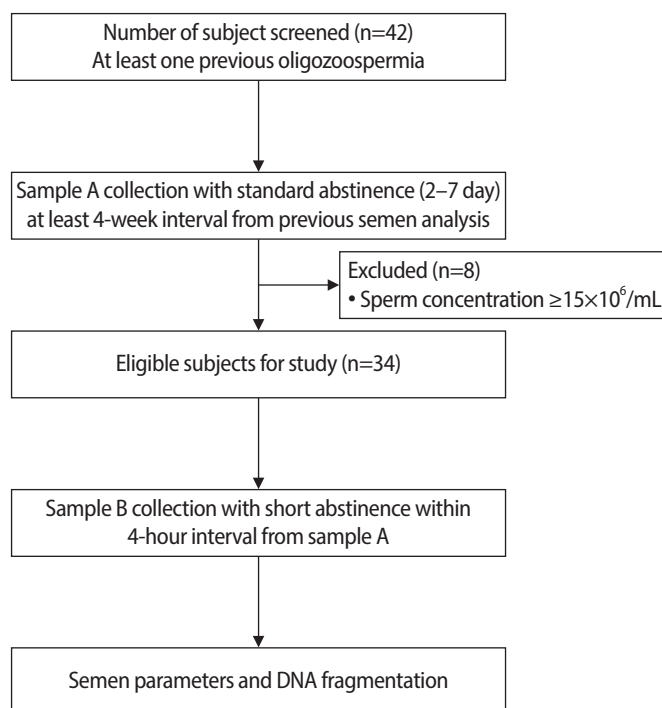


Figure 2. Participant flowchart.

there was no difference in the percentage of immotile sperm ( $p=0.694$ ). The TMSD was significantly lower after the short abstinence period than after 2 to 7 days of abstinence, with a median difference of  $4.24 \times 10^6$ /ejaculate ( $p < 0.001$ ). There were no significant differences in the percentage of total motility, the percentage of SDF, and the percentage of normal morphology (Table 2).

### 3. Relationship of semen parameters and SDF between 2 and 7 days and short abstinence

Univariate regression showed significant linear relationships of

**Table 1.** Baseline characteristics of semen parameters at screening (n=34)

Baseline characteristic	Value
Age (yr)	37.08 ± 5.05
Abstinence (day)	3 (2–3)
Volume (mL)	2.75 (1.6–3.4)
Concentration ( $10^6$ /mL)	6 (3–10)
Total sperm count ( $10^6$ /ejaculate)	13.6 (7.25–26.6)
Motility (%)	46.64 ± 15.62
Progressive (%)	34.79 ± 17.79
Non-progressive (%)	10 (5–14)
Immotile (%)	53.50 ± 15.63
Total motile sperm count ( $10^6$ /ejaculate)	5.57 (3–11.2)
Normal morphology	
1%	30 (88.24)
2%	4 (11.76)

Values are presented as mean ± standard deviation, median (interquartile range), or number (%).

volume, concentration, total sperm count, sperm motility, and SDF between the samples from 2 to 7 days of abstinence and those from the short abstinence period, except for TMSD (Figure 3). The Supplementary Figure 2 shows the SDF results of each semens.

## Discussion

In this study, in oligozoospermic men, a short abstinence period (within 4 hours) was associated with lower semen volume, concentration, and total sperm count than the values observed after 2 to 7 days of abstinence. The median differences in semen volume, concentration, and total sperm count in short abstinence were 1.2 mL,  $2 \times 10^6$ /mL, and  $9.60 \times 10^6$ /ejaculate, respectively. Furthermore, there were significant linear relationships in volume, concentration, and total count between the two abstinence periods. Hence, repeated semen collection within 4 hours is likely to provide comparable or lower results in terms of semen volume, sperm count, and sperm motility. Most previous studies in normozoospermic men found that shorter abstinence resulted in lower volume, concentration, and total sperm count [17,19,21,25,26]. However, studies in men with oligozoospermia have inconsistent regarding whether shorter abstinence decreases or increases semen volume, concentration, and total count [15,26,27]. Studies in infertile men have shown that the duration of abstinence had a statistically significant favorable influence on semen volume, sperm concentration, and total sperm count [13,14,18]. The results of the present study appeared to be consistent with most studies in normozoospermic and infertile samples, showing that shorter abstinence resulted in lower semen volume, concen-

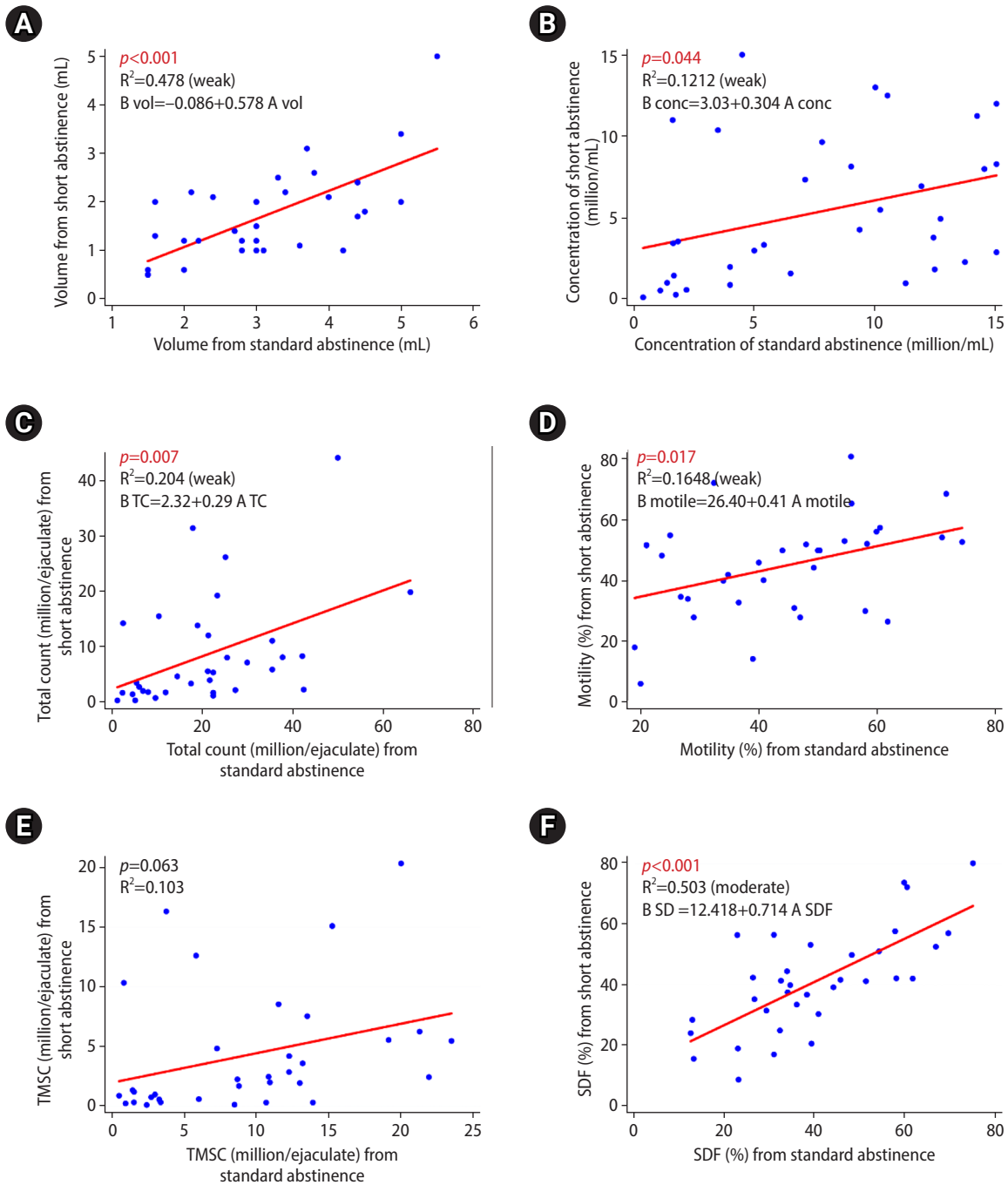
**Table 2.** Comparison of semen parameters and SDF between the standard and short abstinence periods (n=34)

Parameter	Abstinence		Difference	p-value
	Standard (2–7 days) (Sample A)	Short (within 4 hours) (Sample B)		
Abstinence (hr)	66.24 ± 18.72	2.63 ± 0.50		
Volume (mL)	3 (2 to 3.8)	1.45 (1 to 2.1)	-1.2 (-1.90 to -0.90) <sup>d</sup>	< 0.001 <sup>a,b</sup>
Concentration ( $10^6$ /mL)	7.45 (2.20 to 12.4)	3.68 (1.6 to 8.3)	-2 (-5.07 to 0.25) <sup>d</sup>	0.011 <sup>a,b</sup>
Total sperm count ( $10^6$ /ejaculate)	21.36 (8.14 to 27.39)	5.04 (1.86 to 12.1)	-9.60 (-21.30 to -3.36) <sup>d</sup>	< 0.001 <sup>a,b</sup>
Motility (%)	43.73 ± 15.96	44.64 ± 16.39	0.90 (-5.24 to 7.06) <sup>e</sup>	0.766 <sup>c</sup>
Progressive (%)	32.92 ± 14.34	30.75 ± 12.30	-2.17 (-7.70 to 3.35) <sup>e</sup>	0.430 <sup>c</sup>
Non-progressive (%)	9.6 (6 to 15)	13.5 (8 to 20)	2.5 (-2 to 11) <sup>d</sup>	0.036 <sup>a,b</sup>
Immotile (%)	56.26 ± 15.96	55.06 ± 15.98	-1.20 (-7.37 to 4.96) <sup>e</sup>	0.694 <sup>c</sup>
Total motile sperm count ( $10^6$ /ejaculate)	8.74 (3 to 13.20)	2.13 (0.60 to 5.55)	-4.24 (-9.39 to -0.72) <sup>d</sup>	< 0.001 <sup>a,b</sup>
SDF (%)	40.26 ± 16.64	41.64 ± 16.89	0.93 (-3.50 to 5.38) <sup>e</sup>	0.670 <sup>c</sup>
Normal morphology				
1%	34 (100)	34 (100)		

Values are presented as mean ± standard deviation, median (interquartile range), or number (%).

SDF, sperm DNA fragmentation.

<sup>a</sup>The p-value was calculated by Wilcoxon signed-rank test; <sup>b</sup>Significant; <sup>c</sup>p-value was calculated by the paired t-test; <sup>d</sup>Median (interquartile range); <sup>e</sup>Mean (95% confidence interval).



**Figure 3.** Scatter plot and linear regression line of semen parameters: (A) volume, (B) concentration, (C) total count, (D) motility, (E) total motile sperm count (TMSC), and (F) sperm DNA fragmentation (SDF) between standard and short abstinence periods.

tration, and total sperm count. The reduction in sperm concentration and total count in the short abstinence ejaculate may be due to the lack of time to transfer spermatozoa from the more proximal sections of the epididymis to the cauda and vas deferens, as well as semen volume, the majority of which is produced in the seminal vesicles and prostate gland.

This study showed that the percentage of non-progressive motility was significantly higher in the short abstinence group, while there was no significant difference in the percentage of immotile sperm. The TMSC was significantly lower in the short abstinence group than after 2 to 7 days of abstinence, with a median difference of  $4.24 \times 10^6$ /ejaculate. Univariate regression also showed significant linear rela-



tionships of sperm motility between 2 and 7 days and short abstinence, but no linear relationship of TMSC was detected. In terms of motility, the results of the present study differ from those of most previous studies. Previous studies in normozoospermic men showed a significant decrease in the percentage of sperm motility on days 11 to 14 of sexual abstinence compared with abstinence of fewer than 11 days [23]. In other words, shorter abstinence was associated with better sperm motility. Short abstinence (4 hours) was associated with significantly higher values of the total and progressive motility and velocity parameters [19]. Short abstinence (2 hours) showed higher velocity, progressiveness, and hyperactivation [25]. In addition, 1 day of abstinence showed better sperm motility than 4 days of abstinence [28]. However, another study found no difference in total motility and TMSC between 3–5 days and 18–30 hours of sexual abstinence [29]. Previous studies of patients with oligozoospermia or oligoasthenoteratozoospermia showed better motility with shorter abstinence periods [15,26,27]. A maximum mean sperm motility of 30.3% was observed after 1 day of abstinence [23]. Short abstinence (40 minutes) improved progressive grade A motility [27]. The sperm motility and TMSC of the second ejaculation (after 30 to 60 minutes of abstinence) were significantly higher than those of the first ejaculation (after 3 to 5 days) [15]. Sexual abstinence of less than 24 hours showed the highest mean percentage of progressively motile sperm [26]. The significant increase in non-progressive motility after a short abstinence period from this study is inconsistent with the findings of most previous studies. In oligozoospermic men, the sperm transport time through the epididymis was three times longer than in normozoospermic men. In addition, it has been suggested that some patients with supposed idiopathic testicular failure might have a partial obstruction [23]. Therefore, spermatozoa may be exposed to a high level of ROS for a more extended period in the genital tract, which might have a deleterious effect on sperm motility. However, there were remarkable variations between the duration of the short abstinence periods and the control group among the previous studies compared to our study.

This study included only oligozoospermic men; all samples from the 2 to 7 days and short abstinence periods had a 1% proportion of normal morphology according to Kruger's strict criteria. A large study in 1,621 normozoospermic samples revealed no difference in morphology according to abstinence time [26]. Most studies in men with oligozoospermia have shown an increase in normal morphology with short abstinence [15,23,27]. However, a study in 416 oligozoospermic samples did not find a significant difference in the percentage of normal sperm morphology during different abstinence times. Nonetheless, an abstinence period of less than 24 hours was associated with the highest mean percentage of normal sperm morphology [26]. This study could not compare morphology because all oligo-

zoospermic samples had 1% proportions of normal morphology. A high level of SDF should cause this result in all samples; furthermore, we analyzed a small number of samples. The percentage of normal sperm morphology showed a significant negative correlation with the percentage of SDF [30].

There was no significant difference in the percentage of SDF in this present study between the short abstinence period and 2 to 7 days of abstinence. Most studies in normozoospermic men showed an improvement in SDF with short abstinence periods [18,21,22,29,31]. However, a study of 100 normozoospermic men found no differences in SDF between an abstinence period of 4 days and 4 hours [19]. A study that included both normozoospermic and oligozoospermic men showed lower SDF after a short abstinence period. However, the study did not perform a subgroup analysis for each group [31]. The results from the present study in terms of SDF are inconsistent with previous study results. Different methodologies for detecting SDF (e.g., TUNEL assay, the comet assay, the sperm chromatin structure assay, and the sperm chromatin dispersion test) may also be responsible for these contradictory findings. Since the etiology of SDF is multi-factorial, involving intrinsic and/or extrinsic factors [32], a persistently high level of SDF despite short abstinence in this study might reflect severe damage to spermatozoa due to problems with the sperm chromatin packaging process during spermatogenesis.

## 1. Strengths

Most previous studies investigating the influence of ejaculatory abstinence on semen parameters were retrospective and based on the results of a single semen analysis. In this study, we conducted prospective research on semen parameters in the same participants who had confirmed oligozoospermia by repeating the semen analysis after at least 4 weeks to avoid enrolling individuals with significant discrepancies in sperm concentration.

There may have been substantial variation in sperm counting chambers and counting techniques in many studies, which could have led to significant overestimations or underestimations of sperm motility and concentration, especially in oligozoospermic samples [11,33]. Therefore, we performed semen analysis based on the standard WHO 2010 guideline [11], which provides the most accurate results. We excluded men with a semen volume of less than 1.5 mL/ejaculate associated with ductal obstruction or incomplete samples. The TUNEL assay, a direct assay to assess DNA fragmentation, was used with flow cytometry; this method provides objective and accurate results with minimal interobserver variability, can be performed on a few sperm, and has a high level of experimental repeatability.

## 2. Limitations

The results of this study were obtained from a single center and

with a relatively low number of men. In addition, the participants in this study were 45 years old or younger. Therefore, the results could not be generalized to oligozoospermic men >45 years of age. Furthermore, we did not have data on ROS testing and other functional semen parameters. Additionally, sperm parameters, as intermediate outcomes for infertility treatment, may not reflex the pregnancy outcomes.

### 3. Conclusions

This study in oligozoospermic men showed that concentration, volume, total count, and TMSC after a short abstinence period were significantly lower than after 2 to 7 days of abstinence. There were no significant differences in the percentage of total sperm motility and SDF between 4 hours and 2–7 days of abstinence. Significant linear relationships were found for volume, concentration, total sperm count, sperm motility, and SDF, but not TMSC, between both groups in the univariate regression analysis. A short abstinence period did not have a negative effect on sperm quality, as represented by sperm motility and SDF. The IVF cycle for oligozoospermic men can be improved by consecutive semen collection within 4 hours in addition to the first semen sample in some circumstances.

### Conflict of interest

No potential conflict of interest relevant to this article was reported.

### Acknowledgments

We thank the entire Ramathibodi IVF Laboratory staff for their technical assistance.

### ORCID

Nattaporn Poopaibool <https://orcid.org/0000-0002-0833-5687>  
 Amornrat Tangprasittipap <https://orcid.org/0000-0003-0313-2191>  
 Sukanya Chumchuen <https://orcid.org/0000-0001-9550-5092>  
 Chonthicha Satirapod <https://orcid.org/0000-0002-6158-4068>  
 Artitaya Singwongsa <https://orcid.org/0000-0001-8526-4088>

### Author contributions

Conceptualization: NP, AS. Data curation: NP, AT, SC, CS, AS. Formal analysis: NP, CS, AS. Methodology: AT, SC. Project administration: NP, AT, SC. Writing-original draft: NP, AS. Writing-review & editing: AS.

### Supplementary material

Supplementary material can be found via <https://doi.org/10.5653/cerm.2023.06100>.

### References

1. Thonneau P, Marchand S, Tallec A, Ferial ML, Ducot B, Lansac J, et al. Incidence and main causes of infertility in a resident population (1,850,000) of three French regions (1988-1989). *Hum Reprod* 1991;6:811-6.
2. Male Infertility Best Practice Policy Committee of the American Urological Association; Practice Committee of the American Society for Reproductive Medicine. Report on optimal evaluation of the infertile male. *Fertil Steril* 2006;86(5 Suppl 1):S202-9.
3. Milardi D, Grande G, Sacchini D, Astorri AL, Pompa G, Giampietro A, et al. Male fertility and reduction in semen parameters: a single tertiary-care center experience. *Int J Endocrinol* 2012;2012:649149.
4. Dickey RP, Pyrzak R, Lu PY, Taylor SN, Rye PH. Comparison of the sperm quality necessary for successful intrauterine insemination with World Health Organization threshold values for normal sperm. *Fertil Steril* 1999;71:684-9.
5. Devroey P, Van Steirteghem A. A review of ten years experience of ICSI. *Hum Reprod Update* 2004;10:19-28.
6. Agarwal A, Said TM. Role of sperm chromatin abnormalities and DNA damage in male infertility. *Hum Reprod Update* 2003;9:331-45.
7. Meseguer M, Santiso R, Garrido N, Garcia-Herrero S, Remohi J, Fernandez JL. Effect of sperm DNA fragmentation on pregnancy outcome depends on oocyte quality. *Fertil Steril* 2011;95:124-8.
8. Johnson L, Varner DD. Effect of daily spermatozoan production but not age on transit time of spermatozoa through the human epididymis. *Biol Reprod* 1988;39:812-7.
9. Sanchez-Martin P, Sanchez-Martin F, Gonzalez-Martinez M, Gosalvez J. Increased pregnancy after reduced male abstinence. *Syst Biol Reprod Med* 2013;59:256-60.
10. Moustafa MH, Sharma RK, Thornton J, Mascha E, Abdel-Hafez MA, Thomas AJ Jr, et al. Relationship between ROS production, apoptosis and DNA denaturation in spermatozoa from patients examined for infertility. *Hum Reprod* 2004;19:129-38.
11. World Health Organization. WHO laboratory manual for the examination and processing of human semen. 5th ed. WHO; 2010.
12. Marshburn PB, Alanis M, Matthews ML, Usadi R, Papadakis MH, Kullstam S, et al. A short period of ejaculatory abstinence before intrauterine insemination is associated with higher pregnancy rates. *Fertil Steril* 2010;93:286-8.

13. Borges E Jr, Braga DPAF, Zanetti BF, Iaconelli A Jr, Setti AS. Revisiting the impact of ejaculatory abstinence on semen quality and intracytoplasmic sperm injection outcomes. *Andrology* 2019;7: 213-9.
14. Gupta S, Singh VJ, Fauzdar A, Prasad K, Srivastava A, Sharma K. Short ejaculatory abstinence in normozoospermic men is associated with higher clinical pregnancy rates in sub-fertile couples undergoing intra-cytoplasmic sperm injection in assisted reproductive technology: a retrospective analysis of 1691 cycles. *J Hum Reprod Sci* 2021;14:273-80.
15. Sugiyam R, Al-Salem JA, Nishi Y, Sugiyama R, Shirai A, Inoue M, et al. Improvement of sperm motility by short-interval sequential ejaculation in oligoasthenozoospermic patients. *Arch Med Sci* 2008;4:438-42.
16. Scarselli F, Cursio E, Muzzi S, Casciani V, Ruberti A, Gatti S, et al. How 1 h of abstinence improves sperm quality and increases embryo euploidy rate after PGT-A: a study on 106 sibling biopsied blastocysts. *J Assist Reprod Genet* 2019;36:1591-7.
17. Keihani S, Craig JR, Zhang C, Presson AP, Myers JB, Brant WO, et al. Impacts of abstinence time on semen parameters in a large population-based cohort of subfertile men. *Urology* 2017;108:90-5.
18. Comar VA, Petersen CG, Mauri AL, Mattila M, Vagnini LD, Renzi A, et al. Influence of the abstinence period on human sperm quality: analysis of 2,458 semen samples. *JBRA Assist Reprod* 2017;21: 306-12.
19. Ayad BM, Van der Horst G, du Plessis SS. Short abstinence: a potential strategy for the improvement of sperm quality. *Middle East Fertil Soc J* 2018;23:37-43.
20. Ayad BM, Horst GV, Plessis SSD. Revisiting the relationship between the ejaculatory abstinence period and semen characteristics. *Int J Fertil Steril* 2018;11:238-46.
21. Agarwal A, Gupta S, Du Plessis S, Sharma R, Esteves SC, Cirenza C, et al. Abstinence time and its impact on basic and advanced semen parameters. *Urology* 2016;94:102-10.
22. Gosalvez J, Gonzalez-Martinez M, Lopez-Fernandez C, Fernandez JL, Sanchez-Martin P. Shorter abstinence decreases sperm deoxyribonucleic acid fragmentation in ejaculate. *Fertil Steril* 2011;96: 1083-6.
23. Levitas E, Lunenfeld E, Weiss N, Friger M, Har-Vardi I, Koifman A, et al. Relationship between the duration of sexual abstinence and semen quality: analysis of 9,489 semen samples. *Fertil Steril* 2005;83:1680-6.
24. Sharma R, Masaki J, Agarwal A. Sperm DNA fragmentation analysis using the TUNEL assay. *Methods Mol Biol* 2013;927:121-36.
25. Alipour H, Van Der Horst G, Christiansen OB, Dardmeh F, Jorgensen N, Nielsen HI, et al. Improved sperm kinematics in semen samples collected after 2 h versus 4-7 days of ejaculation abstinence. *Hum Reprod* 2017;32:1364-72.
26. Dupesh S, Pandiyan N, Pandiyan R, Kartheeswaran J, Prakash B. Ejaculatory abstinence in semen analysis: does it make any sense? *Ther Adv Reprod Health* 2020;14:2633494120906882.
27. Bahadur G, Almossawi O, Zeirideen Zaid R, Ilaheebuccus A, Al-Habib A, Muneer A, et al. Semen characteristics in consecutive ejaculates with short abstinence in subfertile males. *Reprod Biomed Online* 2016;32:323-8.
28. Okada FK, Andretta RR, Spaine DM. One day is better than four days of ejaculatory abstinence for sperm function. *Reprod Fertil* 2020;1:1-10.
29. Sukprasert M, Wongkularb A, Rattanasiri S, Choktanasiri W, Satirapod C. The effects of short abstinence time on sperm motility, morphology and DNA mDamage. *Andrology* 2013;2:107.
30. Oliveira JB, Massaro FC, Baruffi RL, Mauri AL, Petersen CG, Silva LF, et al. Correlation between semen analysis by motile sperm organelle morphology examination and sperm DNA damage. *Fertil Steril* 2010;94:1937-40.
31. Dahan MH, Mills G, Khoudja R, Gagnon A, Tan G, Tan SL. Three hour abstinence as a treatment for high sperm DNA fragmentation: a prospective cohort study. *J Assist Reprod Genet* 2021;38: 227-33.
32. Agarwal A, Majzoub A, Esteves SC, Ko E, Ramasamy R, Zini A. Clinical utility of sperm DNA fragmentation testing: practice recommendations based on clinical scenarios. *Transl Androl Urol* 2016; 5:935-50.
33. Sukcharoen N, Ngeamjirawat J, Chanprasit Y, Aribarg A. A comparison of Makler counting chamber and improved Neubauer hemocytometer in sperm concentration measurement. *J Med Assoc Thai* 1994;77:471-6.